



ISO-TECH is now RS Pro

RS Pro is the new name for ISO-TECH's comprehensive selection of test and measurement products. The entire range is backed by the RS Seal of Approval, your guarantee of quality and performance.



Test & Measurement equipment fine-tuned for quality and performance

Every part matters



Pass it on!

Over 40,000 quality products engineered to industry standards - giving you the confidence they will stand up to any challenge you face.

Now you know, pass it on!

Tell a friend about our best-selling brand
hken.rs-online.com/passiton



PRO

The range you want.
The quality you need.

over
40k

Choice

Over 40,000 products
and growing



Performance

Engineered to
industry standards



Quality

Rigorously tested
and backed by the
RS Seal of Approval



Value

Up to 30% savings on
branded alternatives



Phone us on 2421 9898

Join the conversation



Terms & Conditions

All products sold in this publication are subject to the terms and conditions of sale set out at hken.rs-online.com. For full Terms & Conditions visit RS Online.

Contents

- 05 3-Year Warranty Highlights
- 06 Automation & Control Gear
- 07 Cables & Connectors
- 08 Electronic Components
- 09 Fasteners & Fixings
- 10 Tools & Consumables
- 11 Test & Measurement

A LEGACY OF A STRONG BRAND AND QUALITY PRODUCTS

Since 1937, RS has been selling products using its own label

Our own brand RS Pro is an extension of our roots and legacy as a company. The first products sold were all RS branded, and were selected to offer quality, performance and reliability at an attractive price.



Our goal is to give our customers choice

RS have since developed into a multi-brand distributor, with customer choice at the heart of our business. Our RS Pro range is part of this choice, where quality and performance meet price.

We stand behind the products we sell

The RS seal of approval means every RS Pro product meets industry recognised standards and rigorous compliance tests. Our team of in-house engineers work with independent organisations to confirm compliance and ensure the right levels of quality and performance.



3 YEAR WARRANTY

A 3 Year Warranty gives you confidence in our quality

At RS we invest time, money and expertise in testing and quality control to guarantee the highest quality products you can trust.

We are so confident in the quality of the products in our RS Pro range, that we are offering a 3 year warranty on over 11,000 products. This high level warranty covers against manufacturing defects on any applicable product*.

TRUSTED QUALITY AND PERFORMANCE FOR 80 YEARS



The face behind the quality

In a world of constant change and continuous technological development, a new or replacement product is never far away - and they all need to be tested. This is where our dedicated testing laboratory run by Alan Lund, Group Compliance Manager, comes in.



Alan Lund,
Group Compliance Manager

“Many vendors simply import and sell without checks and this cannot be in the ultimate interests of anyone, particularly the customer. So when buying from the RS Pro range, you can be confident you're getting outstanding quality and value.”



Warranty Assurance

Every product in the RS Pro range undergoes detailed inspection, rigorous testing and strict compliance auditing.

We are so confident in their quality and reliability, ~~10,000~~ RS Pro products come with an impressive 3-year warranty.



3 YEAR WARRANTY

Look for the RS Seal of Approval

The RS Pro range doesn't just provide value for money; the quality and performance of our products mean we can stand shoulder-to-shoulder with the leading brands. Our products are rigorously tested and backed by the RS Seal of Approval - the trusted sign of quality and performance on over 40,000 RS Pro products.



AUDITED
PRODUCTS CONFORM TO INDUSTRY STANDARDS.



INSPECTED
PRODUCTS INSPECTED TO ENSURE EXCELLENT QUALITY.



TESTED
TESTED BY LEADING ENGINEERS.

All RS Pro products are tested to appropriate industry standards including:



3-YEAR WARRANTY HIGHLIGHTS

9V (PP3) BLOCK CLIP & LEAD

- Battery snap for 9V batteries
- Fully insulated
- Twin wire leads
- Polypropylene rigid battery snap

3 YEAR WARRANTY



489-021 For 1, Press Stud

GLASS FIBRE INSULATED EXTENSION CABLE

- Stainless steel braided options
- Glass fibre insulated flat pair construction, conductors laid flat, glassfibre insulated with glass fibre jacket, silicone varnished throughout and stainless steel overbraid for added protection and mechanical strength
- Temperature rating -60 to +350°C (short periods up to 400°C)

3 YEAR WARRANTY



236-3836 Type K, 2 Cores, 25m

MINIATURE QUICK WIRE PLUG AND SOCKET

- Available in thermocouple types K, J, T, E, N, R/S, B and copper
- Contacts are polarised to prevent incorrect connection
- Easy jab-in connection, just push in wire and tighten screw
- Colour coded in accordance with IEC specification
- Operating temperature +220°C max

3 YEAR WARRANTY



381-7435 Plug
381-7441 Socket

ROUND ANTI VIBRATION FEET

- Moulded feet for use on instrument cases, etc.

3 YEAR WARRANTY



543-513 4.0mm Fixing Hole, 19mm dia. LDPE +70°C -30°C

543-232 4.8mm Fixing Hole, 19mm dia. PE +70°C -30°C

382-2386 4BA Fixing Hole, 12.5mm dia. PE +70°C -30°C

543-248 4BA Fixing Hole, 15.5mm dia. PE +70°C -30°C

STEEL M8 SPRING PLUNGER

- Ideal for applications where a pre-defined positional stop is required or positioning a workpiece against a datum face
- Threaded body has a screwdriver slot
- Available in either a black oxide finish or stainless steel. Both have a retained hardened steel ball
- Black oxide supplied 10 per bag, stainless steel 5 per bag

3 YEAR WARRANTY



478-731 125mm Long

CLEARANCE GAUGE, 0.025 TO 0.175 MM

- Can highlight, clearance, lobing, ovality on shafts
- Volumetric measurement takes surface roughness into account
- Calibration card supplied
- Clearance measurement 0.001in. to 0.020in. (0.025 to 0.5mm) can be taken.
- Non corrosive and oil soluble

3 YEAR WARRANTY



222-4444 0.025 to 0.175 mm

BLACK 4 MM TEST PLUG & SOCKET

- Designed to secure twin small panel terminals in place, resulting in a typical terminal post assembly
- Two separate parts fit together easily and are held together by the panel terminal fittings, resulting in a safe and secure connector assembly

3 YEAR WARRANTY

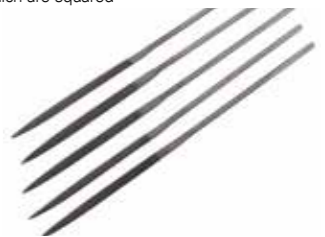


404-856 Length 35mm

160MM SINGLE CUT HCS HALF ROUND NEEDLE FILE

- High quality precision needle files for the fine abrasion, profile cutting and finishing of many common workshop materials
- Each file has a different cross-section as shown and except for the 'hand' and 'warding' which are squared off, all taper to a fine point

3 YEAR WARRANTY

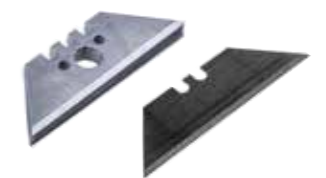


541-6933 Overall length 160 mm

TRIMMING KNIFE BLADES

- Heavy duty knife blades, available in packs of 5 and 10

3 YEAR WARRANTY



546-758 5 Piece Heavy Duty Trimming Blade Set

541-6646 10 Piece Heavy Duty Trimming Blade Set

613-454 5 Piece Hooked Blade Set

613-460 5 Piece Concave Blade Set

813-2760 10 Piece Utility Blade Set

2.5 MM L SHAPE LONG ARM HEX KEY CHROME VANADIUM STEEL

- Chrome Vanadium steel construction
- Chemically blackened finish

3 YEAR WARRANTY



735-071 Finish: Blackened



TYPE K MINERAL INSULATED PROBES

- Insulated (non-grounded) tip
- High grade 310 Stainless Steel sheath
- Terminated with 1m 7/0.2 PTFE insulated cable
- Maximum tip temperature 1100°C

3 YEAR WARRANTY



787-7696	Probe Length 150mm; Diameter 1mm
397-1286	Probe Length 150mm; Diameter 6mm
397-1258	Probe Length 250mm; Diameter 1.5mm
397-1270	Probe Length 250mm; Diameter 3mm
787-7719	Probe Length 500mm; Diameter 1.5mm
787-7734	Probe Length 500mm; Diameter 3mm
787-7759	Probe Length 500mm; Diameter 6mm
787-7737	Probe Length 1000mm; Diameter 3mm
787-7712	Probe Length 1500mm; Diameter 1mm
787-7715	Probe Length 2000mm; Diameter 1mm

GLASS FIBRE INSULATED EXTENSION CABLES

- Stainless steel braided options
- Glass fibre insulated flat pair construction, conductors laid flat, glassfibre insulated with glass fibre jacket, silicone varnished throughout and stainless steel overbraided for added protection and mechanical strength



219-4589	Type K, Unscreened, 10m
236-3836	Type K, Unscreened, 25m
236-3842	Type K, Screened, 25m
236-3909	Type T, Unscreened, 10m
236-3937	Type J, Screened, 25m

MINIATURE IN-LINE PLUGS AND SOCKETS

- Range of miniature thermocouple connectors, for general use
- All contacts are polarised to ensure the correct connection
- Connecters accept thermocouple cable to 4 mm in diameter
- Cable clamp available for securing cable to connectors
- Colour coded in accordance with IEC specification

3 YEAR WARRANTY



455-9764	Type K, IEC, Green, Plug
455-9758	Type K, IEC, Green, Socket
455-9843	Type N, IEC, Pink, Socket
455-9922	Type T, IEC, Brown, Plug
455-9916	Type T, IEC, Brown, Socket
455-9714	Type J, IEC, Black, Plug
455-9679	CU Type, Copper, White, Plug

8-LEVEL TEMPERATURE SENSITIVE LABELS

- Suitable for use in aeronautical, general and electrical engineering
- Dimension: 51 x 18mm



555-415	116°C to 154°C
555-421	160°C to 199°C
555-437	204°C to 260°C

LM10 SERIES PRECISION POSITION SWITCH

- 3 mm Dia. Shaft, 5kΩ, ±20%, 0 - 200ppm/°C, Panel Mount
- Glass filled nylon bodied sensor with 10mm electrical stroke and spring loaded plunger
- For best results, use as a potential divider (not variable resistor) and buffer the resulting output with a high impedance amplifier



317-780	Shaft Diameter: 3 mm
----------------	----------------------

LIQUID FLOW TRANSDUCER

- Suitable for many liquids including water and most fuels
- Connections for both 8 & 12mm diameter hoses
- Reliable and accurate
- Supplied with 2m (approx.) of oil-resistant screened cable



508-2704	Maximum Flow Rate: 0.05 to 10 L/min
-----------------	-------------------------------------

ELEG ALUMINIUM ENCLOSURES

- Sandblasted finish with 3mm wall thickness
- Neoprene gasket for IP65 protection
- Temperature range: -40°C to +100°C
- IP65 Rating



282-1152	87 x 87 x 61mm
282-1168	102 x 102 x 61mm
282-1196	122 x 75 x 61mm
434-9882	152 x 102 x 81mm
282-1219	202 x 102 x 61mm
282-1247	252 x 87 x 61mm
282-1253	252 x 87 x 75mm
282-1269	262 x 127 x 91mm

PNP INDUCTIVE SENSORS

- Stainless steel body with PBT sensing face
- High impact and thermal resistance
- 2m PUR prewired and M12 connector versions
- 10 - 30 V dc, IP68



208-184	3 mm Detection Range, Barrel 52mm length
208-257	8 mm Detection Range, Barrel 52mm length
208-285	20 mm Detection Range, Barrel 62mm length
208-320	1.5 mm Detection Range, Barrel 40mm length

SWITCH MODE DIN RAIL PANEL MOUNT POWER SUPPLY

- Slim design and wide input range.
- Short circuit, overload, over voltage and over temperature protection

3 YEAR WARRANTY



765-4673	120W, 12V dc/ 10A
765-4682	120W, 24V dc/ 5A
765-4685	120W, 48V dc/ 2.5A
765-4689	240W, 24V dc/ 10A
765-4698	240W, 48V dc/ 5A
765-8700	480W, 48V dc/ 10A
765-8707	480W, 24V dc/ 20A

MULTICORE INDUSTRIAL CABLES

- Core Screened Black PVC Industrial Cable 0.22 mm² CSA
- Current Rating 1A, Voltage Rating 300V, -20 to +80 °C



660-0439	4 Core, Outer Diameter 4.4mm, 100m
660-0435	4 Core, Outer Diameter 4.4mm, 25m
660-0445	6 Core, Outer Diameter 5.6mm, 100m
660-0457	8 Core, Outer Diameter 6.1mm, 100m
660-0454	8 Core, Outer Diameter 6.1mm, 25m
660-0463	12 Core, Outer Diameter 6.9mm, 100m
660-0460	12 Core, Outer Diameter 6.9mm, 25m
660-0479	20 Core, Outer Diameter 8.6mm, 100m
660-0482	36 Core, Outer Diameter 10.8mm, 100m
660-0473	36 Core, Outer Diameter 10.8mm, 25m

METALLIC 316 STAINLESS STEEL ROLLER BALL CABLE TIES

- Available in uncoated and polyester coated stainless steel
- Flame retardant
- High tensile strength
- Self-locking design



159-5357	200mm x 4.6 mm
159-5313	200mm x 7.9 mm
159-5329	360mm x 4.6 mm
159-5335	360mm x 7.9 mm
547-4305	520mm x 4.6 mm
547-4311	520mm x 7.9 mm
743-6166	680mm x 7.9 mm

NOT EXPANDABLE BRAIDED FIBREGLASS CABLE SLEEVES

- Resistant to most chemicals and solvents
- Highly flexible - will bend without flattening around a diameter less than 10 times its bore
- Highly resilient - recovers roundness after being flattened
- Sleeve Length: 5m



668-1245	Diameter: 6mm
668-1248	Diameter: 8mm
668-1242	Diameter: 10mm
668-1251	Diameter: 12mm
668-1254	Diameter: 16mm
668-1258	Diameter: 20mm

MINIATURE BRAIDED SCREEN TWIN ROUND PVC CABLES

- Capacitance: 215 pF/m core to screen
- 7/0.2mm plain copper stranded conductors
- PVC insulated
- Braided screen with overall grey PVC sheath



749-2591	Core Strands: 7/0.2 mm
749-2579	Core Strands: 7/0.6 mm

COAXIAL CABLES

- Flexible coaxial cable for use in communications systems



665-5877	Brown, RG316/U, FEP Sheath
665-5855	Black, RG174U, Polyvinyl Chloride PVC Sheath
665-5827	Black, RG213B/U, Polyvinyl Chloride PVC Sheath

FLEXIVOLT® 100M PVC EQUIPMENT WIRE

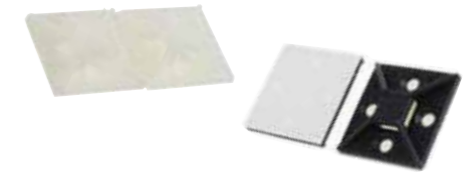
- Flexivolt® is polyvinylchloride, especially designed for electro-technical application
- Shows good mechanical properties
- Completely flexible at temperatures from -10°C to +60°C



285-7662	Black, 0.1 mm ² CSA, 150 V 27 AWG
285-7763	Black, 0.25 mm ² CSA, 500 V 23 AWG
285-7820	Black, 0.5 mm ² CSA, 500 V 20 AWG
285-7735	Blue, 0.15 mm ² CSA, 500 V 26 AWG
285-7791	Blue, 0.25 mm ² CSA, 500 V 23 AWG
285-7814	Green, 0.25 mm ² CSA, 500 V 23 AWG
285-7678	Red, 0.1 mm ² CSA, 150 V 27 AWG
285-7729	Red, 0.15 mm ² CSA, 500 V 26 AWG
285-7779	Red, 0.25 mm ² CSA, 500 V 23 AWG
285-7836	Red, 0.5 mm ² CSA, 500 V 20 AWG
285-7808	Yellow, 0.25 mm ² CSA, 500 V 23 AWG

SELF-ADHESIVE CABLE TIE MOUNT

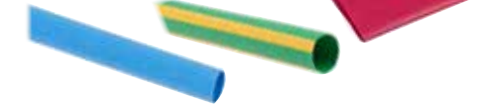
- Available in a choice of sizes
- Designed to support lightweight bundles
- For increased support, mounting holes are provided for screws



666-751	2.5mm Max; Width 13 mm
865-9701	4.1mm Max; Width 19 mm
227-996	4.6mm Max; Width 19.5 mm
229-560	5mm Max; Width 29 mm
865-9704	5.6mm Max; Width 26.3 mm
629-2514	10.2mm Max; Width 38.5 mm
730-0335	38mm

POLYOLEFIN HEAT SHRINK TUBING 2:1

- Full range of colours and diameters
- Supplied in lengths of 1.2 m
- Flame retardant (excluding clear)
- High mechanical and electrical strength



398-206	Black, 3.2mm Dia
398-155	Black, 19.1mm Dia
397-916	Blue, 6.4mm Dia
397-966	Blue, 38.1mm Dia
399-956	Clear, 12.7mm Dia
399-984	Clear, 38.1mm Dia
398-076	Green/Yellow, 6.4mm Dia
398-048	Green/Yellow, 19.1mm Dia
398-307	Red, 4.8mm Dia
398-240	Red, 38.1mm Dia
399-518	Yellow, 4.8mm Dia
399-647	Yellow, 25.4mm Dia

CLEAR HEAT SHRINK TUBING 2:1

- Rated to +175°C
- 2:1 Shrink ratio
- Thin wall semi-rigid Polyvinylidene
- Flame, chemical, solvent, and abrasion resistant
- Supplied in 1.2m lengths



398-464	1.6mm Dia
398-458	2.4mm Dia
398-442	3.2mm Dia
398-436	4.8mm Dia
398-420	6.4mm Dia
398-414	9.5mm Dia
398-408	12.7mm Dia
398-391	19.1mm Dia
398-385	25.4mm Dia



RS PRO RASPBERRY PI 3 CASES

- Made of ABS plastic
- Plenty of ventilation
- Rubber feet
- Cut-outs for all connections
- 3 parts that easily clip together



- 908-4215** Black
- 908-4212** White
- 908-4218** Clear

RS PRO RASPBERRY PI LCD TOUCH SCREEN CASES

- Renders the touch screen and Pi board portable
- Cut-outs for all connections
- Camera board connector slot
- Wall mount features



- 906-4665** Black
- 100-3894** White
- 117-6025** Clear

VESA MOUNTS FOR USE WITH RS PRO RASPBERRY PI 3 CASE

- To mount an RS Pro Raspberry Pi 3 case to the back of a display or monitor using the VESA attachment points
- Includes a locking clip which can be used to prevent the SD card from being removed from the Raspberry Pi



- 122-3465** Black
- 122-3464** White
- 122-3463** Clear

POWER OVER ETHERNET FOR RASPBERRY PI

- Doesn't require use of GPIO pins
- No assembly or soldering needed
- On/off button
- 802.3af (mode A and B) PoE
- Class 0 device



897-7141 36-56V input voltage; 5V output voltage

AUDIO & VIDEO CONNECTORS

- Wide range of high quality audio and video connectors for different purpose



- 106-830** 2.5 mm Panel Mount Jack Socket
- 106-868** 3.5 mm Cable Mount Mono Jack Plug
- 392-611** 3.5 mm Cable Mount Mono Jack Socket
- 392-615** 3.5 mm Cable Mount Stereo Jack Socket
- 392-649** 3.5 mm Cable Mount Stereo Plug
- 106-874** 3.5 mm Chassis Mount Mono Jack Socket
- 392-643** 3.5mm Series, 3.5 mm Cable Mount Stereo Jack Plug
- 392-598** 6.35 mm Cable Mount Jack Socket, 3
- 392-655** Adapter, Female 1/4 in Stereo to Male 3.5 mm Stereo
- 392-576** Adapter, Female 3.5 mm Stereo to Male 1/4 in Stereo
- 392-592** Adapter, Female RCA to Male 3.5 mm Mono
- 106-975** Black Cable Mount RCA Plug
- 392-677** Panel Mount Speaker Terminal Socket, 2Way, 3A, Quick Connect Termination
- 392-683** Panel Mount Speaker Terminal Socket, 4Way, 3A, Quick Connect Termination
- 106-953** Red Cable Mount RCA Plug

TEST CONNECTORS

- Wide range of high quality test connectors



- 434-784** 2.54mm Pitch Spring Test Probe, 3A
- 445-100** 4mm Black Terminal Post, 10A, 2BA Thread
- 423-201** Black 4mm Socket, Nickel Plated, 50V, 16A
- 444-781** Black Terminal Post, 3kV, 30A, M6 Thread
- 423-217** Blue 4mm Socket, Nickel Plated, 50V, 16A
- 423-223** Green 4mm Socket, Nickel Plated, 50V, 16A
- 423-239** Red 4mm Socket, Nickel Plated, 50V, 16A
- 423-251** White 4mm Socket, Nickel Plated, 50V, 16A
- 423-245** Yellow 4mm Socket, Nickel Plated, 50V, 16A

DIN 43650 SOLENOID CONNECTORS

- Type A socket Type
- 10A/250 V ac



- 811-8235** 2P+E, Male, Through Hole, MER Flat Series, 10A, 250 V ac
- 811-8269** 3P+E, Female, Cable Mount, ME-311/S Series, 10A, 250 V ac
- 811-8174** 3P+E, Female, Cable Mount, ME-311/SL Series, 10A, 24V dc
- 811-8231** 3P+E, Male, Through Hole, ME Flat Series, 10A, 250 V ac

SWITCHES

- Wide range of high quality switches



- 419-750** DPDT PCB Mount Non-Latching Relay, 12V dc Coil, 2 A Subminiature DIP Relay
- 333-300** Illuminated SPST, On-Off Rocker Switch Panel
- 419-788** PCB Slide Switch SPDT On-Off-On 5 A @ 28V dc Top
- 734-7062** PCB Slide Switch SPDT On-On 400 mA @ 20V Slide
- 734-7334** SPDT Leaf Lever Mini Switch, 4 A @ 28 V dc
- 429-482** SPNO Reed Relay, 0.5 A, 12V dc
- 291-9631** SPNO Reed Relay, 1 A, 48V dc
- 419-794** SPST, On-Off Rocker Switch Panel
- 476-612** SPST, On-Off Rocker Switch Panel
- 291-9681** Toggle Switch SPDT On-On, 5 A @ 250 V ac, Panel Mount

STEEL 3100 PIECE SCREW/BOLT, NUT & WASHER KIT

- To DIN912
- Bright zinc plated steel
- Supplied in large workshop storage unit
- Kit includes cap screws, plain nuts, nylon insert nuts, and washers



233-4349 Thread Size: No. 10, No. 4, No. 6, No. 8

BRIGHT ZINC PLATED, CLEAR PASSIVATED STEEL PAN HEAD MACHINE SCREWS

- To ANSI/ASME B18.6.3
- Bright zinc plated and clear passivated



- 560-552** M2.5 x 6mm
- 560-580** M3 x 6mm
- 274-5092** 6.35mm Long, Thread Size UTS 4-40
- 275-0347** 6.35mm Long, Thread Size UTS 6-32
- 275-0369** 9.525mm Long, Thread Size UTS 6-32

1200 PIECE STAINLESS STEEL SCREW/BOLT KIT

- A2 grade 18 / 8 stainless steel (Type 304 S15)
- Ideal for use in service departments, development and research labs etc
- Kit contains 1200 self tapping screws, supplied in a moulded plastic storage case



530-523 Thread Size: No. 10, No. 4, No. 6, No. 8

PLAIN STAINLESS STEEL SPRING SPRING WASHERS

- Spring Washers - Single Coil
- Square version
- DIN 7980 Standards



- 530-848** M6, 304, A2
- 530-854** M8, 304, A2
- 530-860** M10, 304, A2

ENAMELLED STEEL OPEN PUSH-ON FASTENERS

- Made from enamelled steel
- Metric and imperial retainers available
- Available as packs of individual sizes or as a boxed kit, containing 50 of each size specified in the table
- Kit contained in a moulded compartment storage box



- 172-335** For 4mm Shaft
- 172-357** For 6mm Shaft
- 172-313** For 2.5mm Shaft

STEEL PLAIN WASHERS

- Steel washer zinc plated, for ISO metric fasteners
- Metric to BS4320 Form A
- DIN 125 A



- 525-947** Bright Zinc Plated, 1.60mm Thickness, M6
- 527-634** Bright Zinc Plated, 1.60mm Thickness, M8
- 527-640** Bright Zinc Plated, 2.00mm Thickness, M10
- 560-338** Zinc Plated, 0.5mm Thickness, M3

HEX SOCKET COUNTERSUNK STAINLESS STEEL PLAIN SOCKET SCREWS

- Good corrosion resistance
- Recyclable
- Typical Applications
- Machine tooling



- 171-893** M6 x 16mm
- 171-792** M3 x 10mm

HEX SOCKET SET STAINLESS STEEL PLAIN SOCKET SCREWS

- Stainless steel grub screws with hexagon socket
- Metric thread



- 137-714** M3 x 3mm
- 137-837** M6 x 12mm

BRIGHT ZINC PLATED STEEL HEX WASHERS SELF-DRILLING SCREW

- Zinc plated hexagon self tapping screw
- TO DIN 7504



- 546-5806** 13mm Long
- 546-5834** 16mm Long



WIFI MICROSCOPE

- For use with Windows, OS X, iOS or Android operating systems
- Hand held
- In-built WiFi transmission
- Magnification: 5x - 200x



126-1727 1300000 pixel, Wi-Fi, x5 @ 200

¼ INCH AIR BLOW GUN, 6 BAR

- Air powered clean up guns that can be converted into a vacuum or blow gun by unscrewing the rear of the gun, reversing the venturi unit and screwing the gun back together
- The venturi/vortex action multiplies input and prevents risk of stalling



806-763 6 Bar Working Pressure

18 PIECE ENGINEERS SCREWDRIVER SET

- 18 piece set containing popular sizes for mechanical and general purpose environments: Phillips, Pozidriv, Slotted Flared, Slotted Parallel Screwdrivers
- Supplied in a zipped wallet



459-3972 Set Contents Pozidriv: PZ1 x 100, Pozidriv: PZ2 x 125 mm

RF FIELD EMISSION DETECTOR

- RF range 38 mV to 20 V/M
- Frequency range 50 MHz to 3.5 GHz
- Sensors triple axis (X, Y, Z)
- Manual data memory (Max & AVG) records
- Calibration factor, Alarm and Clock settings



106-5307 50 MHz @ 3.5 GHz

DIGITAL LIGHT METER

- Spectral sensitivity close to CIE photopic curve
- Measuring levels ranging 0 to 400 000 lux, 0 to 40 000 foot-candles
- Accurate and instant response
- Data Hold function
- MAX/MIN function



123-2221 Minimum Light Level: 0lx

IDM106N HANDHELD DIGITAL MULTIMETER

- 10 A (continuous) current range
- Data hold/relative modes
- 1 MHz counter with full 9999 Count display
- Diode test and continuity sounder



123-3236 10A ac 1000V ac 10A dc 1000V dc

MULTI-PURPOSE CABINET KEY

- Four position arm tool, offering five differing drive possibilities: 6.5 mm and 8.1 mm square sockets, 6.4 mm (in) AF Hex socket, 9.8 mm triangular socket and 9 mm winged key drive
- Hex to in square drive adapter



439-3025 Zinc Finish

12 PIECES CHROME VANADIUM STEEL METRIC RATCHET SPANNER SET

- 180° flex head allows the ratcheting spanner to reach and work in tight places and angles
- Continuous tension design controls the flex head
- Manufactured to ANSI Standard



487-268 Sizes: 8 mm, 9 mm, 10 mm, 11 mm, 12 mm, 13 mm, 14 mm, 15 mm, 16 mm, 17 mm, 18 mm, 19 mm

170 PIECE HSS-TIN COATED DRILL SET

- Ground flute
- Sizes increase in 0.5mm increments
- Manufactured to DIN338 standard
- Heavy duty steel case with moulded rigid insert for secure storage of drill bits



507-1732 Sizes 1.0 mm to 10 mm drill bits

RS41 DIGITAL THERMOMETER

- User Selectable Temperature Scales (°C or °F)
- User Selectable Readout °C, °F or Kelvin (K)
- Type K Thermocouple
- Single Thermocouple input
- Max Hold / Data Hold



123-1940 1 Input Handheld, K Type Input

HOT WIRE ANEMOMETER

- Fast response probe
- Air flow volume
- Instant / Average / 2/3 V max flow measurement
- 30 m/s, 59 knots, 68 mile/h, 110 km/h, 6000 ft/min, 999900 ft³/min, 999900 m³/min Max Air Velocity



123-2224 Measurement Parameters Air Flow, Air Volume

2 CHANNELS DIGITAL OSCILLOSCOPE, 200MHZ

- Dual-input oscilloscope, multimeter and recorder (including TrendPlot and waveform) in one instrument
- 5.7 inch TFT colour LCD display
- Input voltage through BNC up to CAT II 300V and CAT III 150V



123-6457 2 Channels, 200MHz

11 PIECES VDE/1000 V ELECTRICIANS TOOL KIT

- VDE approved
- Constructed from high grade steel
- Two component comfort grip handles
- Supplied in zipped wallet



161-221 VDE/1000V

88 PIECES PHONE REPAIR TOOL KIT

- Perfect for any service consumer electronics repair.
- Quality metal driver and metal Bits
- Smartphone tablet repair screen open safe suction cup



124-9873 88 Pieces

94 PIECES MECHANICAL TOOL KIT

- Large tool kit for automotive work comprising of a comprehensive socket and bit, spanner and precision screwdriver sets
- Chrome Vanadium construction with Chrome Molybdenum Steel sockets



734-8889 Carry Case: Blow Moulded

IPM6300 POWER QUALITY ANALYSER

- Balanced 3 phase and single phase 3000 A graphical power quality analyser with data logging functions
- Designed for analysing and diagnosing power quality and disturbance problems in electrical installations and power circuits



123-2201 3 phase and single phase

4-INPUT DATA LOGGING THERMOMETER

- Isolated Input Protection of 350 Vp-p between any two inputs
- Highly accurate thermometer with thermocouple K, J, E, T, R, S, N, L, U, B, C types
- 4 input function T1/T2/T3/T4 temperature display



123-2235 187 x 73 x 53 mm

IPM242 POWER CLAMPMETER

- 10000 Count digital display
- Active display backlight and analogue bargraph
- VoltSense (Non-contact Voltage measurement)
- True RMS reading on AC and AC+DC mode



124-1959 Absolute Maximum Power Measurement 600kW